

Healthcare Capability Brochure

Company Profile and Experience – a brief overview

K2
Construction
Management

2001 → Beginning

Established as a leading
Project Management firm
called k2 Consultancy

2014 → Diversification

Acquired leading cost
consultancy firm Rider
Hunt

2015 → International

Delivered projects
overseas e.g. Penhalligons,
Honolulu, New York,
Taiwan

2019 → Expansion

Became part of a global
network of companies,
K2CM now part-owned
by Hanmi Global

2022 → Specialisation

Established Construction
Management arm of the
business in the North-
East

2024 → Focus

Consolidated
Construction
Management (CM) as
the core focus of the
business – reflected in
our new name K2CM

K2
CM

2001

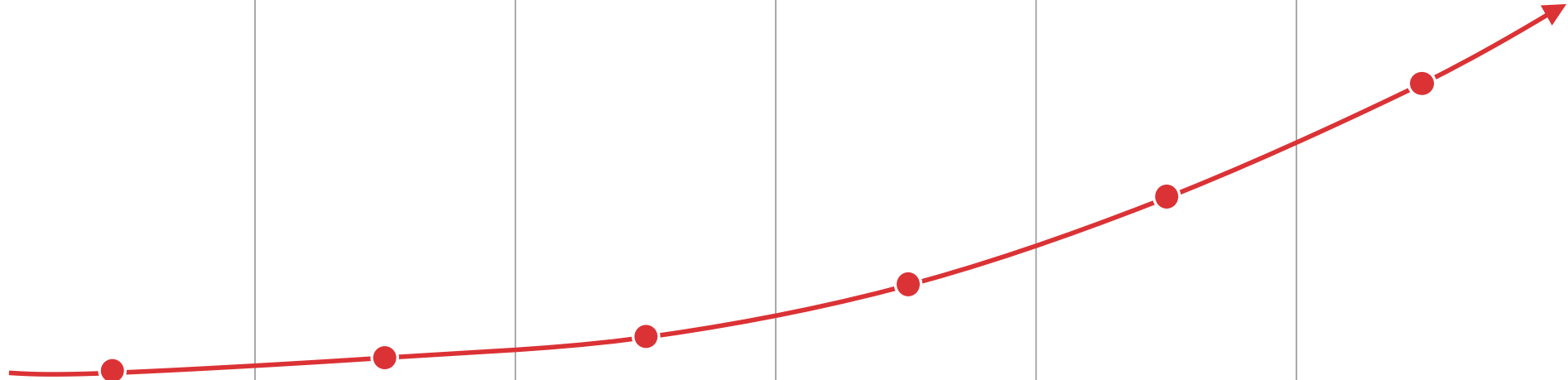
2014

2015

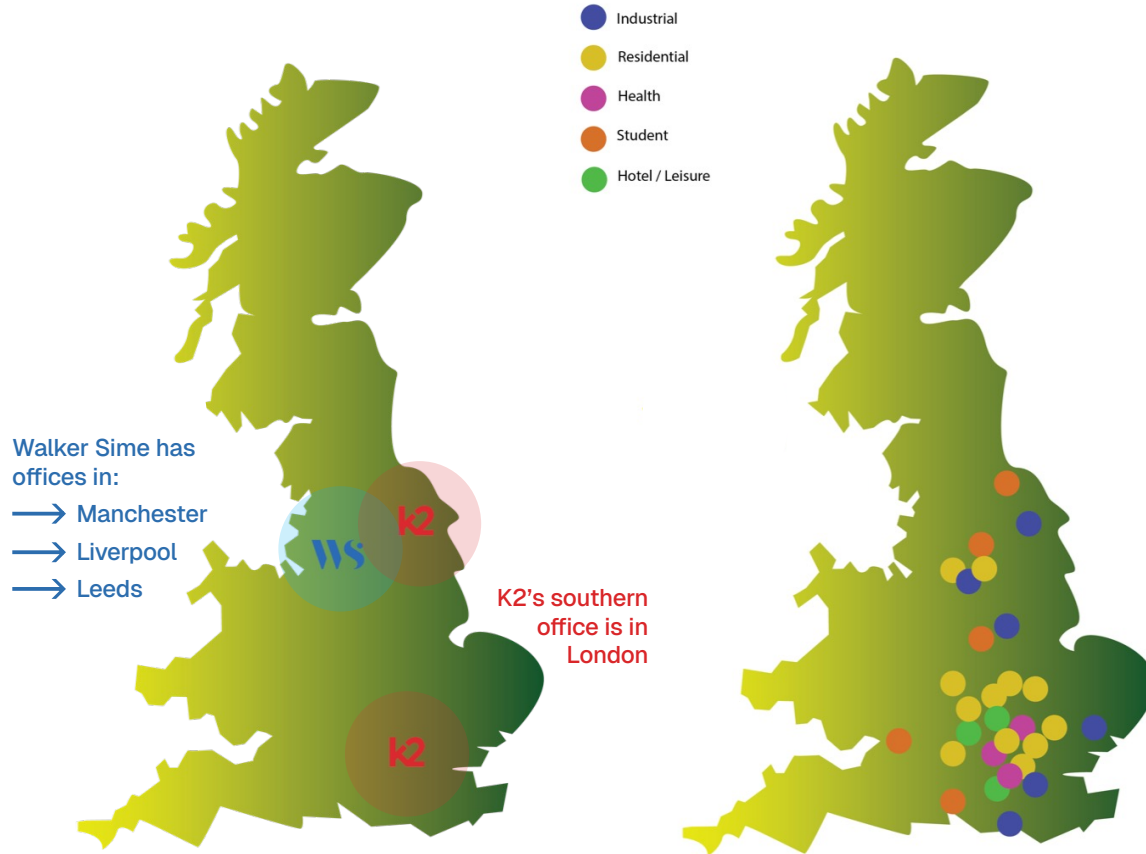
2019

2022

2024



K2CM Locations



Office Locations

We are a nation-wide Construction Management business, this is core to our offering.

Our offices span London, the North-East and the North-West via our sister company Walker Sime.

Our London office provides services to international clients globally with projects delivered across 4 continents.

Company Board

John Setra
Founder

K2CM

Executive Management Team

Paul Franklin
Managing Director

Senior Leadership Team

Paul Allen
Director – Head of
Client Solutions

David Gardner
Director – Head of
Consultancy

Steve Porter
Director – Construction
Management

Andy Crouch
Project Director

Allan Lwanga
Technical Director

Kathryn Gardner
Project Director

Bally Kelsi
Project Director

Glenn Forbes
Project Director

Phil Baily
Preconstruction
Director

Cost Management Team

PM Team

Construction Management Team

Certifications

K2CM hold the following ISO certifications ISO 9001, ISO 14001 and 1SO 45001



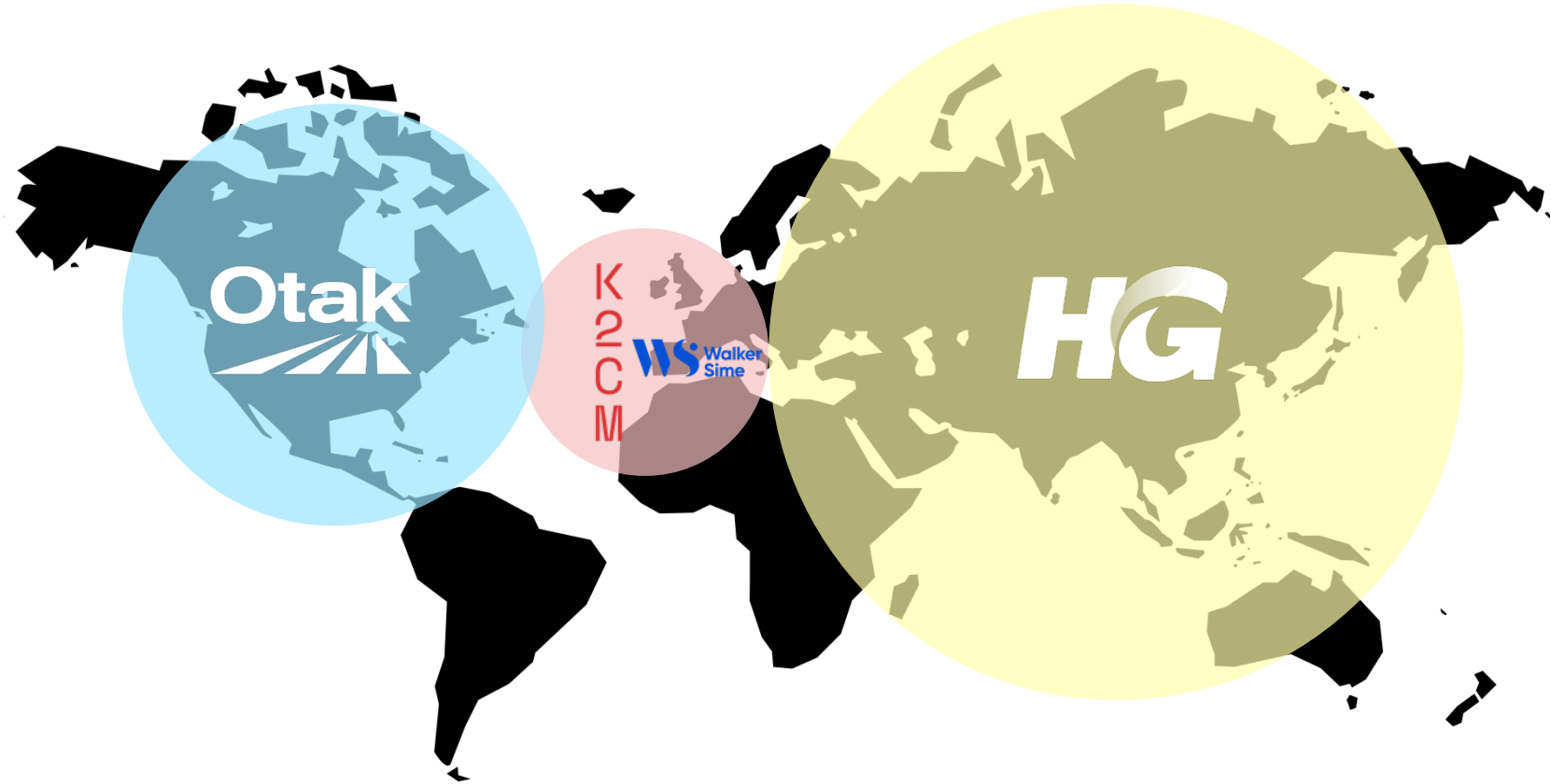
Charterships

Many of the K2CM team are chartered members of professional construction bodies.



A Truly Global Business

K2
Construction
Management



K2CM

K2's Repositioning

🌟 In 2025 we relaunched our brand identity at K2 Construction Management with a shiny new logo, website and brand promises ready to share with the world.

🌍 A world that is changing fast with AI, carbon reduction targets, post-pandemic shifts, global instability and new economic pressures reshaping how we all live and work.

🚧 Yet construction, by its nature, is slow to adapt. And with 7 out of 10 major projects running over time and/or budget, construction must evolve.

K
2
C
M

🚧👁️ At K2CM we see this differently. We believe that Construction Management is the future because it offers the agility and collaborative mindset today's complex projects demand. Our CM philosophy, especially early engagement with the supply chain, runs through everything we do.

💡 We believe construction needs a fresh approach—it's time for CM.

👏 K2CM deliver end-to-end Construction Management solutions that meet the complexities of today's construction projects. K2CM provides control and cost transparency to our clients. Inherently flexible and collaborative. K2CM drives efficiency, supports innovation and delivers higher quality solutions.

K
2
C
M

K
2
C
M



Problem → Construction is broken

Problem — 7 out of 10 UK construction projects run over time and budget. Deeply ingrained behaviours mean projects struggle to adapt to progressive thinking, new technologies, methodologies and evolving economic, environmental and planning conditions.



K2CM Solution → Construction Management

CM is an intelligent 'fit for purpose' platform that delivers better, faster, higher quality projects.

STOP START STOP

Problem → Stop / Start

With most traditional construction processes, every element ideally needs to be designed and costed before construction can begin. Projects can take longer to start and when they do, unforeseen design changes can cause expensive delays.

FAST FAST FASTER

K2CM Solution → Start Fast

Construction Management is grounded in buildability. Projects can start fast by avoiding delays and working on packaged, independent elements of the building while others are being designed, adapted and finalised. Where traditional construction processes can delay or complicate a project, CM projects finish faster.



Problem → Hidden Cost

With traditional construction contracts, risk is built in and it's not always easy to see where the value goes. Protecting margins and managing the impact of unforeseen challenges is a recipe for compromise and quality suffers.



K2CM Solution → Visible Value

Construction Management is built on transparent fees and costs. You can see where the value goes throughout a project. Control and relationships are maintained. Transparency fosters a collaborative rather than adversarial culture and promotes quality.



Problem → Fragmentation

Traditional construction processes can be fragmented, inflexible and adversarial. This leads to poor communication, inefficient problem solving and ineffective handovers between design and construction.



K2CM Solution → Collaboration

K2 Construction Management's (CM) approach is a collaborative process. Throughout a project, design teams work together with Construction, Project and Cost Management teams to solve any problems before they impact on the project timeline or quality. Often undervalued, good communication speeds up problem solving and delivery and promotes excellent outcomes.



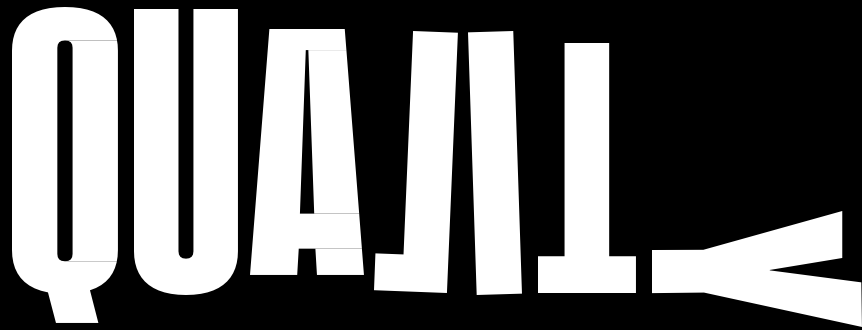
Problem → Rigid Process

Modern construction projects happen in an increasingly fluid environment where unexpected changes are a certainty. Rigid construction processes can cause delays, cost increases or completely derail a project.



K2CM Solution → Adaptable Process

A faster changing world means that over the course of a complex building project, designs will change to accommodate new requirements that could not have been anticipated at the outset. A CM process allows for design changes, controlling costs, avoiding delays and keeping projects on track and optimal for end users.



QUALITY

Problem → Compromise

Fixed price contracts often results in cost-cutting, leading to compromises on design, materials and workmanship. Quality suffers as contractors aim to protect margins, potentially resulting in long-term maintenance issues and a lower standard of finish.



QUALITY

K2CM Solution → Quality

Construction Management focuses on quality through direct management of trade contractors and continuous oversight. Expert teams ensure buildability and address issues proactively, delivering a higher quality building that meets design intent and long-term value goals.

Your Expert Healthcare Construction Team



John Setra

Founder / Director
John.setra@k2cm.co.uk



Bally Kalsi

Project Director, Health Sector Lead
Bally.kalsi@k2cm.co.uk



Allan Lwanga

Head of Cost Management
Allan.lwanga@k2cm.co.uk



Harry Bryan

Associate Director, Project Management
Harry.bryan@k2cm.co.uk



Sean Derrick

Cost Manager
Sean.derrick@k2cm.co.uk

Healthcare Experience within the K2 Construction Management Team

John Setra has acted as project manager and strategic advisor on a number of significant real estate initiatives for major blue chip organisations including BAA and various NHS Trusts. John has considerable healthcare experience, acting as both P21 Project Director and Project Manager upon a number of P21 schemes, as well as projects outside the P21 framework. He is extremely familiar and experienced with the management requirements of operating projects on behalf of an NHS Trusts as well as administering the contracts used (NEC3 Option C: Target Contract with Activity Schedule).

Bally Kalsi has over 20 years' consultancy experience, last 8 years in healthcare. Bally is an expert in developing strategic plans and business cases, delivering complex transformational capital programmes and managing multiple stakeholders in complex operational environments at **Royal Surrey County Hospital NHS Foundation Trust**.

Bally is highly effective at influencing step change within large multifaceted organisations. Bally brings with her a strategic mindset with a health dose of pragmatism which her clients really value. Bally was the project lead for the RICS award-winning Stokes Urology centre.

Harry Baryan is Project Manager of over 20 years with a strong track record across various sectors including healthcare, industrial, logistics and education.

Recently Harry has been working with the **University College London Hospitals NHS Trust** at Queens Square since February 2023, on Ward Refresh programme (£0.28mn), NHNN Pharmacy Reconfiguration (£0.87mn) and WMS Main Hospital Boiler Replacement projects (£2.20mn).

Allan is a chartered Quantity Surveyor with over 25 years construction industry experience. Flexible & adaptable to client needs, entrepreneurial mindset, growth leader, commercially focused with strong financial capability, a strategic thinker with vision, excellent collaborator and an operational excellence-mindset.

Sean excels at measurement and quantification of construction works, as well as having strong economic knowledge, which is invaluable when undertaking production of cost estimates and valuations of works during the construction period. Sean has worked with **Bromley Health & Wellbeing Centre** and **Kings College Hospital NHS Foundation Trust**.



We offer more than just Project Management and Cost Management

We go above and beyond to deliver better projects through added-value services like Development Management, Space Optimisation and Estates Strategy.

We produce Construction Portfolio Management documents, Capital Procedure Manuals and we help develop Business Cases.

It's easy to appoint us because we're on these frameworks:

- Procure Public Framework
- London NHS Procurement Partnership Framework
- Clear Futures National Framework
- Constellia National Framework
- Rise Regional Framework



Our Unique Approach

We always go above and beyond to deliver better projects and certainty of outcomes for our clients.

K2 Construction Management bring you a unique blend of Construction, Cost & Project Management to help you beat the market.

Resulting in better projects, delivered faster and more cost-effectively than market expectation.

Our distinctive, hands-on approach is based on an understanding of how a project will be built and our detailed knowledge of construction methodologies, materials, logistics, programming and modern methods of construction.



The award winning Stokes Centre for Urology, developed in partnership between the NHS and the charity Prostate Project

Health Sector Experience

**OVER
20 YEARS**

Experience in the health sector

**UP TO £200
MILLION**

Developing NHS Trust masterplans

£40 MILLION

Project for the Cancer and Surgical
Innovation Centre at RSCH

4,500 BABIES

Delivered through the maternity unit at
Surrey and Sussex Healthcare facilities

RICS AWARDS

Won the 2020 Social Impact Awards,
Healthcare project of the year 2020

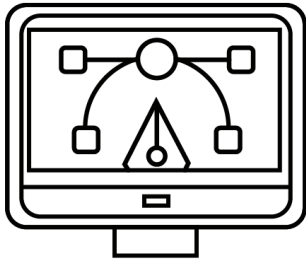
£30 MILLION

Just appointed to Project Manage a new
research facility for the Institute of
Cancer Research

We Deliver Solutions

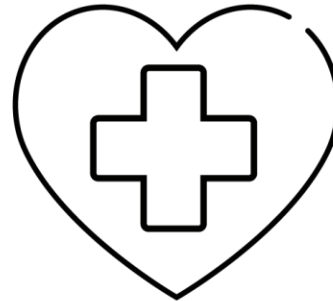
We work at three levels with our healthcare clients.

STRATEGICALLY



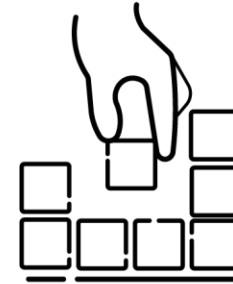
Such as our role with the Department for Health on the £28bn Hospital Improvement Programme

AT ESTATE LEVEL



Developing integrated healthcare campus masterplans for individual NHS Trusts

TACTICALLY



Delivering project, cost and construction management services on a wide range of projects

WE DELIVER SOLUTIONS

K2 Construction Management are a team of experts, sector specialists and senior professionals recognised by our clients for commitment, collaboration and our strategic input.

Built around strategic management skills, our hands-on technical construction expertise and deep market knowledge, K2 Construction Management are accomplished and award winning construction consultancies.

We partner with clients to effectively manage and realise a project's design and successful delivery.

We enjoy long term relationships built on trust, innovation and reliability.

20 YEARS IN THE HEALTH SECTOR

We work with a wide range of clients in the health sector, supporting project delivery on time and budget.

Our distinctive, hands-on construction management approach is based on an understanding of how a project will be built and our detailed knowledge of construction methodologies, materials, logistics, programming and modern methods of construction.

K2 Construction Management have enjoyed a ten year relationship with Royal Surrey County Hospital and are currently managing development of a £200m Masterplan to develop an integrated healthcare campus.

DIRECTOR LED SERVICE

K2 Construction Management's service delivery is led by a board director on each project.

Each director is accountable for the success of their projects.

The directors are supported by experienced project and cost management teams, with extensive specialist knowledge in the healthcare sector.

Together we have delivered a wide range of complex and challenging projects on programme and within budget, often in operational environments and with multiple stakeholders.

A New Cancer and Surgical Innovation Centre

The Royal Surrey County Hospital NHS Foundation Trust is enhancing its capacity with a new Cancer and Surgical Innovation Centre.

The new building is set to open in 2026 and represents an ambitious £40 million development which will provide treatment for an additional 7,000 patients in six new operating theatres.

K2 Construction Management have an integrated and fully committed delivery team which will be able to flex to Royal Surrey's requirements to help achieve the aim of the Cancer and Surgical Innovation Centre.



Optimisation of Space

K2 Construction Management's development of a coherent, aligned clinical and estate strategy is delivering a fit for purpose, flexible, integrated healthcare facility for Royal Surrey County Hospital.

A top down and bottom-up approach through engagement with the leadership team and clinical staff identified priorities across 5 Divisions, 57 Departments, 23 Wards, Estates including 20 Departments and Community sites. Intelligent data collated tested, challenged and supported priorities.

Cultural division between services has led to step change in behaviour so not every problem required a construction led solution and vast amounts of capital. Governance allowed continuous review of space against clinical strategy and confident management decisions.

Business case development enabled the prioritisation of capital plans prior to procuring design teams. Packaging and tendering multiple projects saved time and money.

The optimisation of space has resulted in a new Urology Centre, Emergency Department, 2nd MRI and a new Headquarters creating space for future clinical services. A developed but agile estates masterplan is now in place with capital plans to support delivery which K2 Construction Management continue to manage and support.



Creating a New Focal Point for the Trust

K2 Construction Management are undertaking a full refurbishment of the first floor of Phase 4 Churchill Court, necessary external works and installation/upgrading of plant in accordance with this brief to service the area.

All internal and external areas which are used to access and egress the first floor need to be in a good condition and be compliant with building regulations.

External works will include installation of signage and wayfinding to enable patients to navigate from the public highway to the first floor. A design solution is also required to provide screening from the building entrance of the pub outside area.



The objectives of the wider project are to:

- Provide a facility that facilitates a viable long term service and supports the expected activity
- Provide a clinically safe environment
- Provide a safe, compliant and high quality environment
- Provide a facility which makes best use of the building to provide efficient and effective patient pathways
- Retain and recruit staff
- Provide a flexible and adaptable facility that can respond to changing service models and demands
- Provide an option that is deliverable within cost and programme constraints.

The nature of a Wellbeing Centre is that it is easily accessible, maintains a broad range of Primary, Community and Wellbeing services and supports integrated working/ caring practices. Key functions are:

Primary Care - GP Medical Practice (Dysart Practice)

Generic outpatient facility

Creating a New Focal Point for the Trust

Main Entrance Redevelopment, East Surrey Hospital

The purpose of this project at East Surrey Hospital was to provide a new main entrance that created a calm, professional environment and a welcoming arrival to the hospital.

The Outline Business Case prepared by K2 Construction Management sought to provide a focus for patients and visitors as well as delivering external retail opportunities.

We managed a design competition inviting innovative solutions that aligned with the brief. The project was delivered in two phases, enabling beneficial use of the main entrance as early as possible.

The design team worked closely with retail procurement in providing fit for purpose, shell and core facility, allowing the main entrance and retailers to operate at a higher level than expected.



Delivering a Range of Challenging Projects

Worthing and Southlands Hospital

We were engaged to undertake a strategic review of all estate assets to define an estate wide development plan.

We worked closely with the Trust, developing a masterplan involving redesign of patient facilities, and redevelopment of the Worthing Hospital site.

It included the delivery of two new wards where a combination of our detailed construction management and strategic input delivered significant time and cost savings. Throughout, we ensured minimal disruption to the operation of the hospital and enabled client control through accurate and timely reporting.

“K2 Construction Management’s strong contribution to the project, together with their professional approach and innovation added real value, with high levels of personal service and attention.”

Steven Leivers, Turnaround Director
Brighton and Sussex NHS Trust



Neo Natal Unit

Surrey and Sussex Hospital NHS Trust

Working with East Surrey Hospital, we successfully delivered three phases of a new neonatal unit with all operations continuing.

The project involved the decant of Outpatient Maternity and Dental units, together with the reconfiguration, refurbishment and extension of the Neonatal Department.

This forms part of the site's maternity ward, responsible for delivering around 4,500 babies a year. The existing neonatal unit was kept operational throughout.

We provided project and cost management for the refurbishment and extension of the new unit for Surrey and Sussex Hospital NHS Trust.

"A really great project and very pleased to be involved. Fantastic teamwork from all."

Ian Mackenzie, Director of Information & Facilities
Surrey and Sussex Healthcare NHS Trust



World Class Urology Center

Winner of RICS Social Impact Awards

We successfully delivered The Stokes Urology Centre, an investment of £5.5m, jointly funded by the RSCH NHS Trust and the Prostate Project Charity.

With a JV client and multi-department involvement, effective stakeholder engagement was key to the success of the project and essential in developing enduring relationships.

The judges commented, “This project provides a blueprint for how the NHS and charities can collaborate to provide facilities. In this case it started with one man’s (Colin Stokes MBE) wish to repay his successful cure from a cancer that is the third biggest cancer killer in the UK. The result is a state-of-the-art diagnostic facility which is world class as judged by its peers....”

Due to the inspiring, high quality environment within the building, staff morale has soared.

“This project had many challenges and K2 Construction Management were instrumental in driving resolution between multiple stakeholders. The Royal Surrey County Hospital has no hesitation in recommending K2 Construction Management Consultancy”

Gary Mountjoy, Director of Estates, RSCH



Collaboration to Deliver a new Community Facility

St Luke's Radiotherapy Centre, East Surrey Hospital

An important collaboration between Royal Surrey County Hospital and Surrey and Sussex NHS Trust enabled the development of significant new radiotherapy and chemotherapy services for patients in Redhill and the surrounding area, through the introduction of a new facility providing two linear accelerators at East Surrey hospital.

We managed the design and delivery process of the new facility on behalf of Royal Surrey County Hospital, with close liaison with Surrey and Sussex NHS Trust.

Key challenges included achieving energy performance and the coordination of infrastructure works. The scheme was delivered ahead of programme through efficient design management and co-ordination of infrastructure and new build works all in an operational environment.



Improving MRI Diagnostic Capability

Haste MRI Unit, Royal Surrey County Hospital

We are managing the current three phase project to develop a new MRI Unit in the Haste Wing of Royal Surrey County Hospital.

The project involves stripping out two existing CT scanners and control rooms and provide new in addition to the creation of a new reception and open office space, injection, phlebotomy and consultation room.



Delivery of Improved Oncology Facilities

St Luke's Cancer Centre, Royal Surrey County Hospital

We are managing a two phase project to develop the renowned St Luke's Cancer Centre. This involves the improvement to Oncology department entrance lobby and patient waiting areas; Enlargement of Radiotherapy patients and staff restrooms; and refurbishment of the HDR theatre anaesthetic room. Phase two involves the improvement to Oncology department front entrance foyer and patient flow and waiting areas; increase in the number of multi-function clinic rooms; inclusion of telephone hubs for non-face to face consultations; and improved staff accommodation to facilitate socially distanced working.

Project completed and handed over Summer 2024.



£28bn New Hospital Programme

Working with consultants Bryden Wood we are supporting the NHS in delivering 48 new hospitals, including eight Pathfinder Projects. The NHP has a clear ambition to deliver these projects differently including using standardised designs, the extensive use of MMC and digital technologies.

Together with the team we are creating a hospitals playbook, a blueprint for both the design and delivery of the hospital of the future. This will promote the use of standardisation and MMC and the importance of introducing design for manufacture and assembly (DfMA) at the earliest stage possible. This will also influence how net zero policy is baked into a project's planning from the outset.

Leeds General Infirmary, is one of the eight pathfinder projects on the New Hospital Programme and is being used to centralise children's and adults' services.



Extensive Redevelopment Delivered on Time and on Budget

Horsham Hospital

We were appointed as Client Project Manager to provide leadership on this project which consisted of an £11m redevelopment of Horsham Hospital, West Sussex.

The project included seven elements, namely: Antenatal clinic, Diagnostics (X-ray), Minor Injuries Unit, Intermediate Care, OPMHS, Outpatients, Offices, plus backlog maintenance.

We led the options appraisal stage of the redevelopment project which provided Horsham Hospital with much improved patient experience and greater operational efficiency. We also produced the outline business case.



Successful Project Recovery

£4m Endoscopy Unit, East Surrey Hospital

We managed delivery of this key project, when an existing project team were identified as failing to exercise sufficient control over the project's delivery plan, quality, cost and programme.

Once appointed we undertook a full project review which resulted in work being stopped whilst the scheme was redesigned. A new contractor was appointed, and project team roles and responsibilities were clearly established to ensure control of cost and quality throughout the project delivery.

The project was ultimately delivered within a revised budget and programme.



£500m Future Hospital Strategic Review

Government of Jersey

We were appointed, in partnership with Archus, to provide a strategic review of the Future Hospital's development and design process; site selection and hospital design.

We addressed the GoJ's governance requirements and presented to the members of the Scrutiny Review Panel as well as supporting the Panel in a number of public forums.

The role focused on reviewing the decision making, providing an authoritative and robust audit – and an assessment of the delivery of project, programme and cost management and the management of risk.

“They gave us confidence that they would deliver the strategic healthcare advice and hands-on PM support we needed.”

Senator Kristina Moore, Chair, Scrutiny Liaison Committee,
Future Hospital Review Panel, States of Jersey



Complex Stakeholder Management

Royal Surrey County Hospital

We are currently working with Royal Surrey County Hospital to deliver a fit-for-purpose health campus through development of a comprehensive masterplan. We have worked with RSCH, as partners for ten years, and have developed an estate strategy aligned with the clinical strategy, a £200m masterplan with supporting capital plans, (prioritised through business cases) and have managed stakeholder engagement with 57 departments.

The optimisation of space has so far resulted in a new £5.5m Urology Centre, £10m A&E Department, 2nd MRI and £5m St Luke's Cancer Centre, creating space for future clinical services.

We have provided PM services on all of these successful projects.

“We find the team from K2 Construction Management to be professional, responsive and we know that they will always act in the best interests of the hospital.”

HJ Turner, Director of Organisational Transformation
Royal Surrey County Hospital



Case Studies

CASIC

Cancer & Surgical Innovation Centre
Royal Surrey County Hospital Trust

At K2 Construction Management (K2CM), we are proud to be leading the delivery of the landmark CASIC project for Royal Surrey County Hospital NHS Foundation Trust.

Acting as the Trust's trusted project and cost management partner, we are bringing clarity, structure and leadership to one of its most strategically important investments in patient care.



Fast-tracked innovation, elevated surgery: CASIC redefines patient care at Royal Surrey — powered by K2CM leadership.

The CASIC (Cancer and Surgical Innovation Centre) at Royal Surrey County Hospital is a striking £41.5 million, two-storey modern facility delivered via cutting-edge Modern Methods of Construction (MMC).

Spearheaded by K2CM in project and cost management, this fast-tracked build includes six brand-new operating theatres, a short-stay ward, a recovery area, and a post-anaesthetic care unit.

Built modularly off-site and craned into place in just 21 days via 170 precision-engineered structural steel modules, the project dramatically accelerates delivery while minimising on-site disruption.





The facility is expected to enable an additional 7,000 surgeries per year and build on Royal Surrey's world-class expertise in both robotic and non-robotic surgery.

This project exemplifies K2CM's forward-thinking leadership, working seamlessly alongside MTX Contracts, experts in volumetric MMC, and Healthcare Partners, the Trust's strategic estates partner.

Notable build features include a vibration-resistant, HTM-compliant concrete slab engineered to support advanced surgical equipment on the first floor, enabling continuity with existing theatres and ensuring precision in robotic procedures.



Guided by strong value engineering, the delivery stayed within a stringent budget cap by cleverly repurposing space (such as converting the basement for infrastructure), optimizing layout, and conducting rigorous market testing for cost certainty.



Sustainability was forefront, targeting BREEAM Excellent accreditation and informed by Net Zero Carbon studies for long-term green performance.



The CASIC scheme stands as a showcase of how K2CM's expertise drives outcomes that matter: enhanced patient experience, greater clinical efficiency, and future-proofed facilities.

By providing decisive programme leadership and rigorous cost control, we enabled Royal Surrey to realise its vision with confidence, despite the challenges of delivering within a live hospital environment.

Together with our partners, we have set a new benchmark for how healthcare infrastructure can be delivered — faster, smarter, and with uncompromising quality.

THE STOKES UROLOGY CENTRE

Royal Surrey County Hospital Trust

K2 Construction Management (K2CM) proudly delivered Project and Cost Management services for the creation of The Stokes Urology Centre — a £5.5 million, world-class facility jointly funded by the Royal Surrey County Hospital NHS Foundation Trust and The Prostate Project Charity.

This landmark development sets a new benchmark for how specialist healthcare facilities can be delivered within the NHS — combining clinical excellence, innovation, and compassion in equal measure.



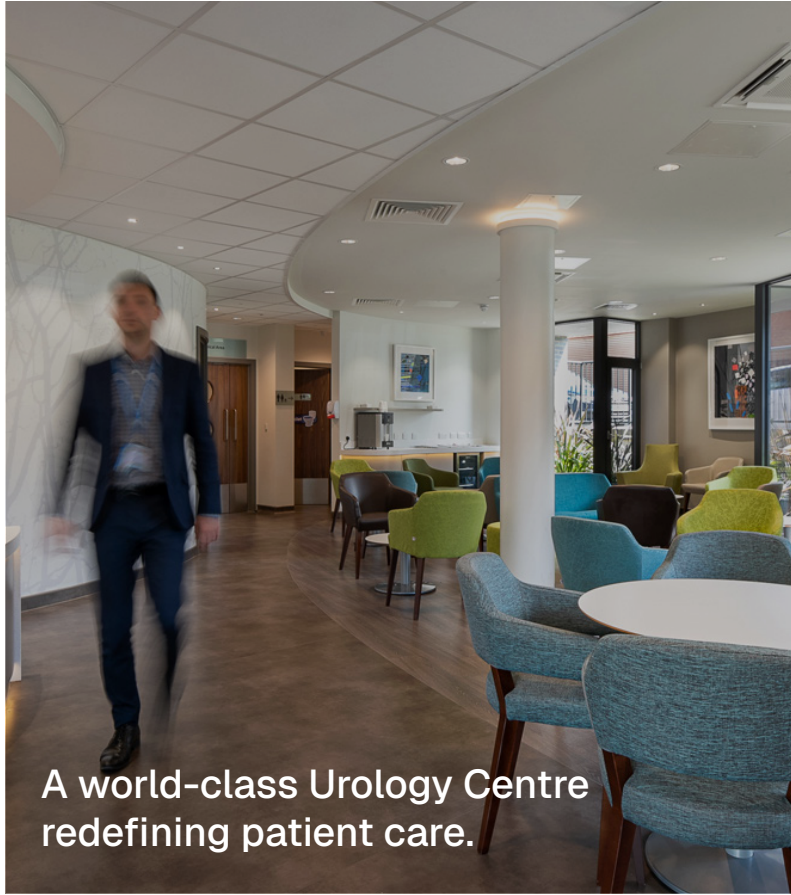
£5.5m project — funded by the NHS and The Prostate Project Charity.

World-class care, purpose-built

Designed to transform the way urology patients are treated, the Centre provides a calming, high-quality environment that supports both cutting-edge treatment and vital research.

The facility includes:

- Five consultation rooms
- Three diagnostic and treatment rooms with recovery area
- A research laboratory and multi-disciplinary meeting room
- A lecture theatre and external courtyard



A world-class Urology Centre
redefining patient care.



Collaborative delivery through expert Project & Cost Management.

It brings together clinicians, researchers, and charity partners in one collaborative environment dedicated to advancing patient care.

Collaboration at its core

With joint funding and multiple departments involved, effective stakeholder engagement was critical. K2CM's leadership ensured alignment between the Trust, The Prostate Project Charity, and clinical teams — maintaining momentum through design, procurement, and delivery.

Our structured, transparent approach fostered enduring relationships and allowed the project's charitable vision to be realised with precision and integrity.

Winner:
RICS Social Impact Award.

Award-winning impact

Winner of the RICS Social Impact Award, the Centre was recognised as a blueprint for collaboration between the NHS and charitable partners.

The judges praised its innovation and the inspiring story behind it — the vision of Colin Stokes MBE, whose determination to repay the NHS for saving his life became a lasting legacy for urology care nationwide.

The result is a state-of-the-art diagnostic and treatment facility that has raised staff morale, improved patient experience, and redefined excellence in NHS-charity collaboration.



Client Testimonial

“This project had many challenges, and K2 were instrumental in driving resolution between multiple stakeholders.

The Royal Surrey County Hospital has no hesitation in recommending K2 Construction Management.”

Gary Mountjoy
Director of Estates, RSCH

K2CM — Turning vision and compassion into world-class facilities.

CHELSEA & WESTMINSTER

Hospital NHS Foundation Trust

K2 Construction Management (K2CM) provided **Project Management services** to **Wates Special Projects** for the transformation of the Reuben Foundation Paediatric Ward — a £1.9 million refurbishment project redefining how children and young people experience care at **Chelsea & Westminster Hospital**.

This award-winning scheme represents a powerful partnership between the **Chelsea & Westminster Hospital NHS Foundation Trust** and the **Reuben Foundation**, combining clinical functionality with creativity, warmth, and hope.

Transforming paediatric care at Chelsea & Westminster Hospital

The 24-bed inpatient ward has been completely reimagined to enhance both patient and staff experience, providing a bright, comforting and inspiring environment for young patients and their families.



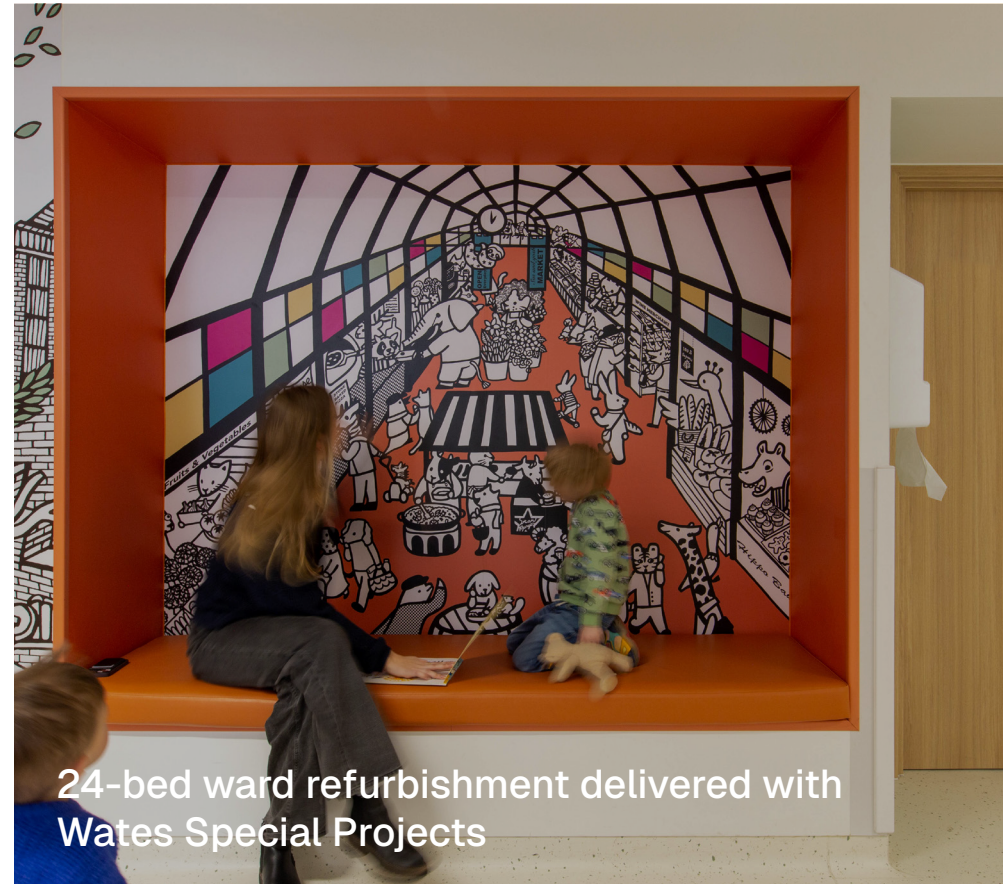
Works included:

- **Full MEP upgrades** — new HVAC, medical gas and electrical systems
- **Smart lighting installation** supporting circadian rhythms and energy efficiency
- **New ceilings, floors and bespoke joinery** to create a calm, resilient environment
- **Specialist zones** for play, family interaction, and quiet recovery

Art-led healing design

Art played a central role in transforming the space. Murals and wayfinding elements, inspired by the spectacular London skyline views from the ward, were integrated throughout to promote comfort, distraction and positivity for young patients.

Every visual element was carefully curated to support the hospital's holistic approach to wellbeing and recovery.



24-bed ward refurbishment delivered with
Wates Special Projects



Highly-Commended: European Healthcare Design Award 2025.

Award-winning collaboration

This highly successful project was recognised at the European Healthcare Design Awards 2025, celebrating its innovative fusion of design, art and clinical excellence.

Through collaboration between K2CM, Wates Special Projects and the Trust, the Reuben Foundation Paediatric Ward now stands as a model for how thoughtful design and disciplined delivery can combine to uplift patient care.



ST LUKE'S CANCER CENTRE

Royal Surrey County Hospital

At K2 Construction Management (K2CM), we are proud to have led the complex, multi-phase redevelopment of the renowned St Luke's Cancer Centre — a £50 million transformation that has redefined how oncology and radiotherapy environments are delivered within live hospital settings.

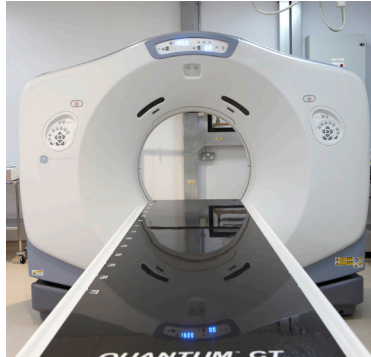
Acting as Royal Surrey's trusted **Project, Cost & Contract Management** partner, we provided the clarity, structure, and programme leadership required to deliver this nine-phase scheme safely, efficiently, and without disrupting critical patient care.



£50 million redevelopment managed by K2CM: Project, Cost & Contract Management

The redevelopment encompassed a major extension, remodelling, and refurbishment across Oncology, Radiotherapy, Phlebotomy, and Pharmacy facilities — spanning two storeys of highly serviced clinical space.

Working in a live environment, the project was meticulously sequenced into nine construction phases, allowing uninterrupted operation of all essential services. Each phase was coordinated to maintain clinical workflows, minimise risk, and ensure seamless transitions for staff and patients alike.



Project Highlights

- **£50 million redevelopment** delivered across **nine phases** with **no service disruption**
- Upgraded **Oncology entrance and patient waiting areas**, providing a more welcoming arrival experience
- New **changing rooms, bathrooms, and staff rest areas** enhancing comfort and dignity
- Refurbished **HDR theatre anaesthetic suite** and extended **Radiotherapy zone**
- A new **patient-facing extension** featuring a café, reception hub, and spacious waiting areas
- **Optimised layouts** consolidating clinical and non-clinical functions for improved staff flow
- Creation of **multi-function consulting rooms, expanded Phlebotomy**, and **virtual consultation pods**
- **External landscaping** with seating terraces, patient drop-off, and accessible parking

Nine-phase delivery in a live environment — zero service disruption.

Delivering through complexity

Despite the challenges posed by the COVID-19 pandemic, K2CM ensured design coordination and stakeholder engagement remained seamless.

Our team managed value engineering, change control, and rigorous budget assurance through the project steering group, safeguarding both cost certainty and quality.

A key achievement was the development of a comprehensive decant strategy for approximately 200 staff members, combining temporary and permanent relocations to maintain operational continuity through every phase.



Results that matter

The redeveloped St Luke's Cancer Centre now provides modern, efficient, and healing environments — enabling Royal Surrey County Hospital to deliver world-class cancer care within a future-ready estate.

This scheme exemplifies how K2CM redefines complex healthcare delivery — **faster, smarter, and with uncompromising quality.**



Client Testimonial

“K2CM's Project Management and Quantity Surveying team delivered outstanding professional services on the redevelopment of the St Luke's Cancer Centre.

Their expertise, dedication, and communication were exemplary from planning through to handover.

The new facility not only enhances clinical functionality but provides a welcoming, healing environment for our patients.”

Nigel Mountjoy | Head of Estates,
Royal Surrey County Hospital

BROMLEY HEALTH & WELLBEING CENTRE

London Borough of Bromley

At K2 Construction Management (K2CM), we are proud to be providing Project and Cost Management services for the delivery of the new Bromley Health & Wellbeing Centre — a £3.2 million transformation creating a modern, integrated care facility in the heart of Bromley.

Following confirmation of the lease, construction and refurbishment works are underway within the



£3.2m transformation managed by K2CM — Project & Cost Management.

A new era of integrated community healthcare

The new centre will bring together a range of primary care, outpatient, community and wellbeing services — including the relocation of the Dysart GP Surgery — under one roof.

Designed to improve accessibility, patient experience and operational efficiency, the facility will serve as a local gateway to joined-up health and care, reducing the need for hospital visits and ensuring services work collaboratively for residents.

Smart, sustainable design

Delivered in partnership with the London Borough of Bromley and the NHS, the project reimagines a civic asset to meet modern clinical standards.

K2CM — Redefining how complex healthcare environments are built.

The refurbishment includes new HVAC and electrical systems, energy-efficient lighting, and re-planned interiors to provide flexible consulting, treatment and staff spaces — all within a sustainable, low-carbon footprint design.



Community benefits

- A permanent new home for Dysart Surgery
- A single, accessible location for primary, community, and wellbeing services
- Enhanced collaboration between providers delivering joined-up care
- Reduced hospital visits through local outpatient provision
- Excellent transport connectivity and disabled access

Please get in touch to find out more

Bally Kalsi

Associate Director
Bally.kalsi@k2cm.co.uk

Harry Baryan

Associate Director
Harry.baryan@k2cm.co.uk